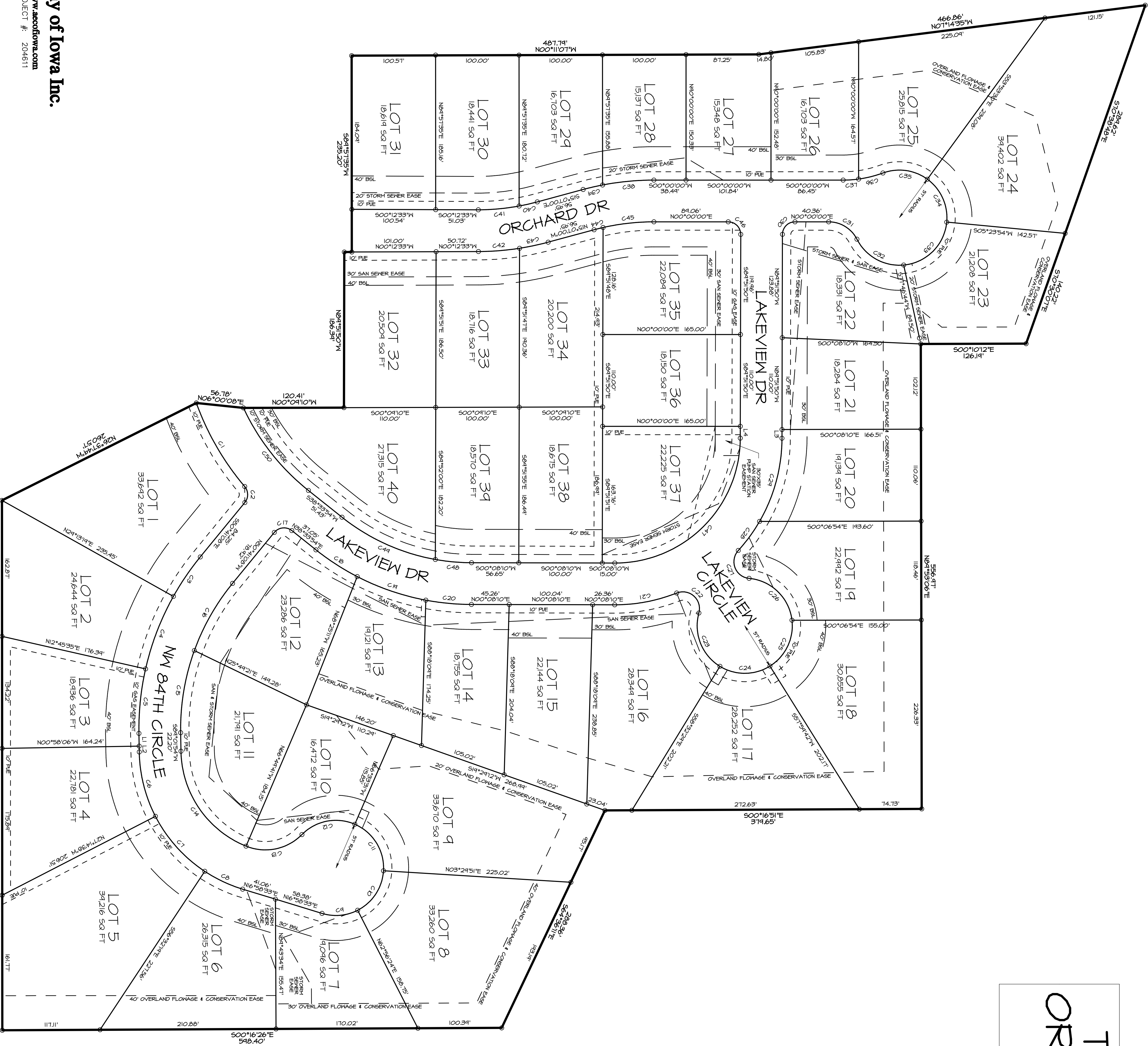


THE RESERVE AT ORCHARD MEADOWS PLAT 1



CURVE TABLE

CURVE	ARC	CHORD BEARING	RADIUS	DELTA	CHORD	TANGENT
C1	162.53	S84°29'44"W	15.00	74.93002	14.31	12.507
C2	202.85	S64°29'44"W	15.00	74.93002	14.31	12.507
C3	57.24	N54°43'53"W	325.00	107°09'31"	57.17	28.707
C4	43.38	N47°00'31"W	325.00	107°09'31"	43.30	41.01
C5	40.27	N47°00'31"W	325.00	107°09'31"	40.19	37.84
C6	40.27	S48°00'31"W	175.00	107°09'31"	40.19	37.84
C7	64.47	S48°00'31"W	175.00	107°09'31"	64.39	48.14
C8	50.35	S29°19'04"W	175.00	107°09'31"	50.27	25.35
C9	48.33	S29°19'04"W	175.00	107°09'31"	48.25	23.33
C10	24.14	N68°46'02"E	57.00	44°10'44"	4.237	23.93
C11	24.14	N68°46'02"E	57.00	44°10'44"	4.237	23.93
C12	68.61	N17°00'45"W	57.00	68°51'41"	64.54	34.97
C13	72.56	N17°00'45"W	61.50	67°59'42"	68.42	41.77
C14	146.05	N59°33'33"E	275.00	66°56'34"	137.85	82.65
C15	100.23	S60°30'25"E	275.00	66°56'34"	92.11	52.83
C16	23.56	S60°30'25"E	15.00	64°13'44"	21.07	14.807
C17	23.56	S60°30'25"E	15.00	64°13'44"	21.07	14.807
C18	54.023	S37°59'42"W	300.00	116°23'	54.023	24.61
C19	81.24	S37°59'42"W	300.00	116°23'	81.24	43.93
C20	54.46	S37°59'42"W	300.00	116°23'	54.46	28.25
C21	44.46	S41°56'19"W	20.00	127°12'35"	35.83	40.307
C22	44.46	S41°56'19"W	20.00	127°12'35"	35.83	40.307
C23	13.70	S68°29'23"W	57.00	14°04'46"	68.67	49.01
C24	63.13	S20°16'41"E	57.00	63°21'11"	54.83	35.24
C25	41.32	S44°20'02"E	57.00	64°31'08"	60.16	38.07
C26	28.22	S44°20'02"E	15.00	63°22'24"	21.16	18.31
C27	44.46	N68°46'19"W	20.00	127°12'35"	35.83	40.307
C28	43.24	S53°46'17"E	200.00	127°23'41"	43.16	21.71
C29	104.36	S74°54'54"E	200.00	127°23'41"	103.18	53.44
C30	28.22	S51°32'57"E	15.00	63°22'24"	21.16	18.31
C31	67.95	S28°55'50"W	57.00	68°18'21"	64.02	38.67
C32	18.48	S44°54'40"E	57.00	54°22'28"	72.80	47.307
C33	58.94	N65°45'16"E	57.00	54°17'36"	58.84	32.44
C34	30.02	N71°10'16"E	57.00	54°17'36"	30.02	15.25
C35	18.58	N23°51'47"W	15.00	74°43'21"	18.58	4.31
C36	6.87	N37°00'15"W	325.00	107°09'31"	6.79	3.023
C37	23.87	N37°00'15"W	325.00	107°09'31"	23.79	11.44
C38	22.31	N27°41'35"W	275.00	107°09'31"	22.23	11.02
C39	44.50	S24°54'14"E	325.00	6°43'34"	44.42	24.607
C40	44.50	S24°54'14"E	325.00	6°43'34"	44.42	24.607
C41	11.13	S28°25'27"E	275.00	2°18'04"	11.13	5.57
C42	59.42	S48°25'27"E	275.00	2°18'04"	59.34	32.44
C43	238.62	N44°51'50"W	150.00	84°54'56"	212.9	150.007
C44	43.57	N25°07'42"E	250.00	4°54'04"	43.51	21.84
C45	124.11	N24°20'35"E	250.00	28°26'34"	123.84	63.36
C50	126.93	N8°44'11"E	275.00	28°21'21"	125.65	64.64

LINE TABLE

LINE	BEARING	DISTANCE
L1	S47°01'51"W	10.22
L2	S47°01'51"E	10.43
L3	S47°01'50"E	10.43
L4	N47°01'50"W	14.15

NOTES
THIS IS A REARRANGING OF THE FINAL PLAT RECORDED IN BOOK 11664 PAGES 302-316

