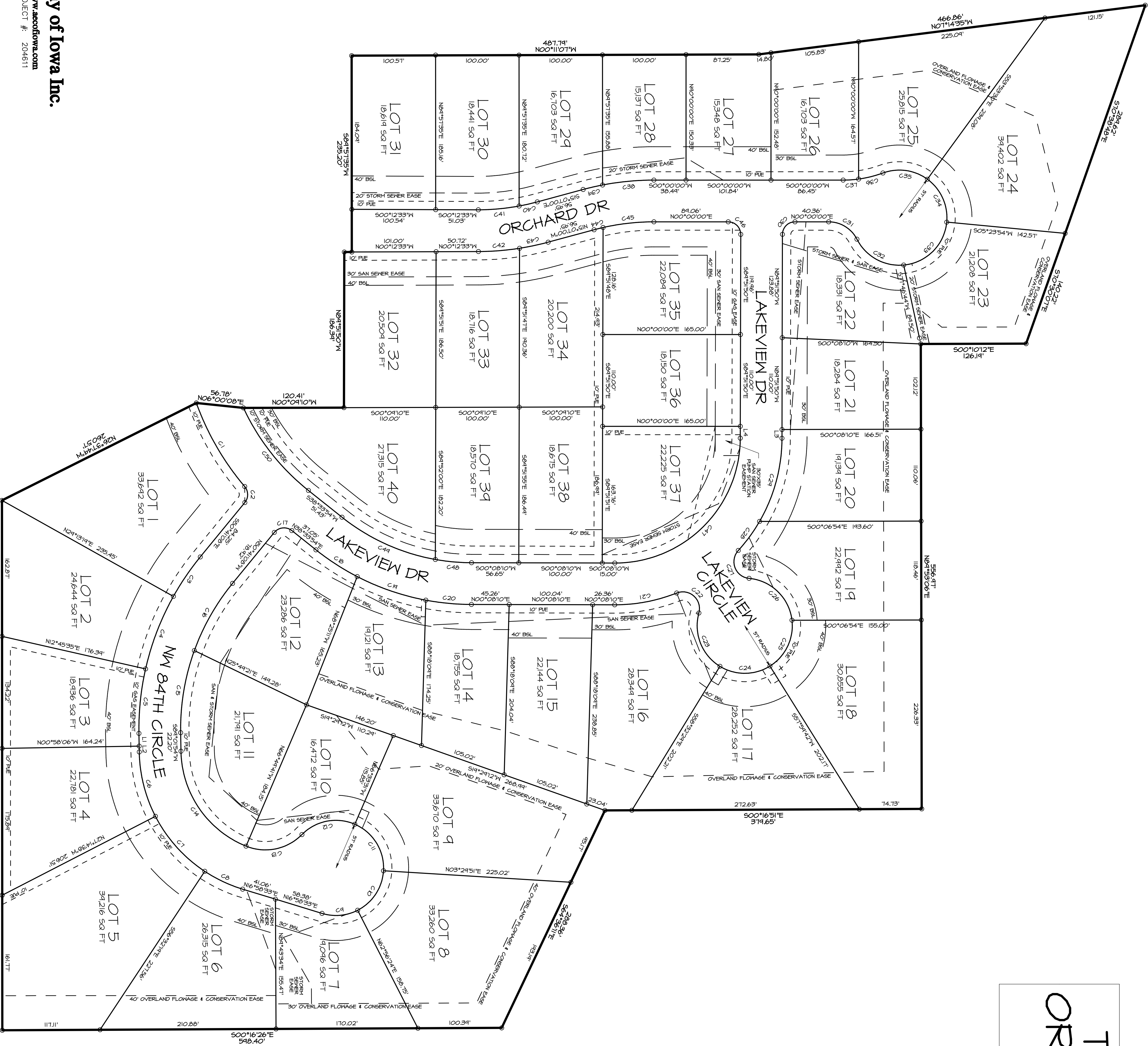


THE RESERVE AT ORCHARD MEADOWS PLAT 1



CURVE TABLE

CURVE	ARC	CHORD BEARING	RADIUS	DELTA	CHORD TANGENT	
C1	162.53	S84°29'44"W	15.00	74.93002	14.21	12.507
C2	202.85	S64°29'44"W	15.00	74.93002	14.21	12.507
C3	57.24	N54°43'53"W	325.00	107.0931	57.17	28.707
C4	43.38	N47°02'31"W	325.00	107.2145	43.30	41.01
C5	40.27	S47°02'31"W	325.00	107.2145	43.30	41.01
C6	40.27	S48°00'31"W	175.00	54.1736	40.20	39.44
C7	64.47	S48°00'31"W	175.00	28.1736	64.39	48.74
C8	50.35	S29°19'04"W	175.00	62.9404	50.19	23.35
C9	43.38	S29°19'04"W	175.00	44.1044	42.87	23.35
C10	24.14	N47°02'31"W	57.00	70.2851	62.52	34.84
C11	24.14	N47°02'31"W	57.00	68.5741	64.54	34.84
C12	68.61	N17°00'45"W	57.00	68.5741	64.54	34.84
C13	72.56	N17°23'42"W	61.50	67.9342	66.42	41.77
C14	146.05	N59°33'33"E	275.00	66.9634	131.85	82.65
C15	100.23	S60°32'57"E	275.00	66.9634	131.85	82.65
C16	23.56	S60°03'17"E	15.00	84.1344	21.07	14.807
C17	23.56	S60°03'17"E	15.00	84.1344	21.07	14.807
C18	54.03	S37°56'42"W	300.00	116.623	56.43	24.61
C19	81.24	S38°57'38"W	300.00	107.8407	86.43	43.45
C20	54.46	S39°22'51"W	300.00	107.8407	86.43	43.45
C21	44.46	S41°56'14"W	20.00	127.1235	35.83	40.307
C22	44.46	S41°56'14"W	20.00	127.1235	35.83	40.307
C23	13.70	S68°29'23"W	57.00	74.0446	68.67	49.01
C24	63.13	S60°16'41"E	57.00	63.2111	64.85	35.24
C25	41.32	S44°20'02"E	57.00	64.3108	60.16	38.07
C26	28.22	S44°20'02"E	57.00	64.3108	60.16	38.07
C27	44.46	N68°44'53"E	20.00	127.1235	35.83	40.307
C28	43.24	S53°46'17"E	200.00	127.2314	43.16	21.71
C29	104.36	S74°54'54"E	200.00	21.9344	103.18	53.40
C30	28.22	S51°32'57"E	15.00	84.1344	21.07	14.807
C31	67.95	S28°55'50"W	57.00	68.1821	64.02	38.67
C32	78.98	S44°54'40"E	57.00	54.2228	72.80	41.307
C33	58.98	N65°45'16"E	57.00	54.1736	58.81	32.44
C34	30.02	N71°10'16"E	15.00	74.93002	14.21	12.507
C35	18.58	N23°51'47"W	15.00	74.93002	14.21	12.507
C36	6.87	N13°00'45"W	325.00	107.2145	43.30	41.01
C37	23.87	N13°00'45"W	325.00	47.1236	23.86	11.44
C38	22.31	N27°41'35"W	275.00	107.5424	22.26	11.62
C39	44.50	S64°54'14"E	325.00	67.4334	44.45	24.607
C40	35.07	S70°01'37"E	275.00	67.0156	35.05	17.95
C41	11.13	S68°22'51"E	275.00	27.8104	11.13	8.57
C42	44.50	S64°54'14"E	325.00	67.4334	44.45	24.607
C43	23.87	N13°00'45"W	325.00	47.1236	23.86	11.44
C44	13.57	N25°07'42"E	250.00	84.9546	21.13	15.007
C45	124.11	N24°20'35"E	250.00	28.2634	122.84	23.86
C50	126.93	N8°44'11"E	275.00	28.2121	125.65	64.64

LINE TABLE

LINE	BEARING	DISTANCE
L1	S47°02'31"W	10.22
L2	S47°02'31"W	10.22
L3	S48°00'31"E	10.43
L4	N47°02'31"W	14.15

NOTES
THIS IS A REARRANGING OF THE FINAL PLAT RECORDED IN BOOK 1164 PAGES 302-316

