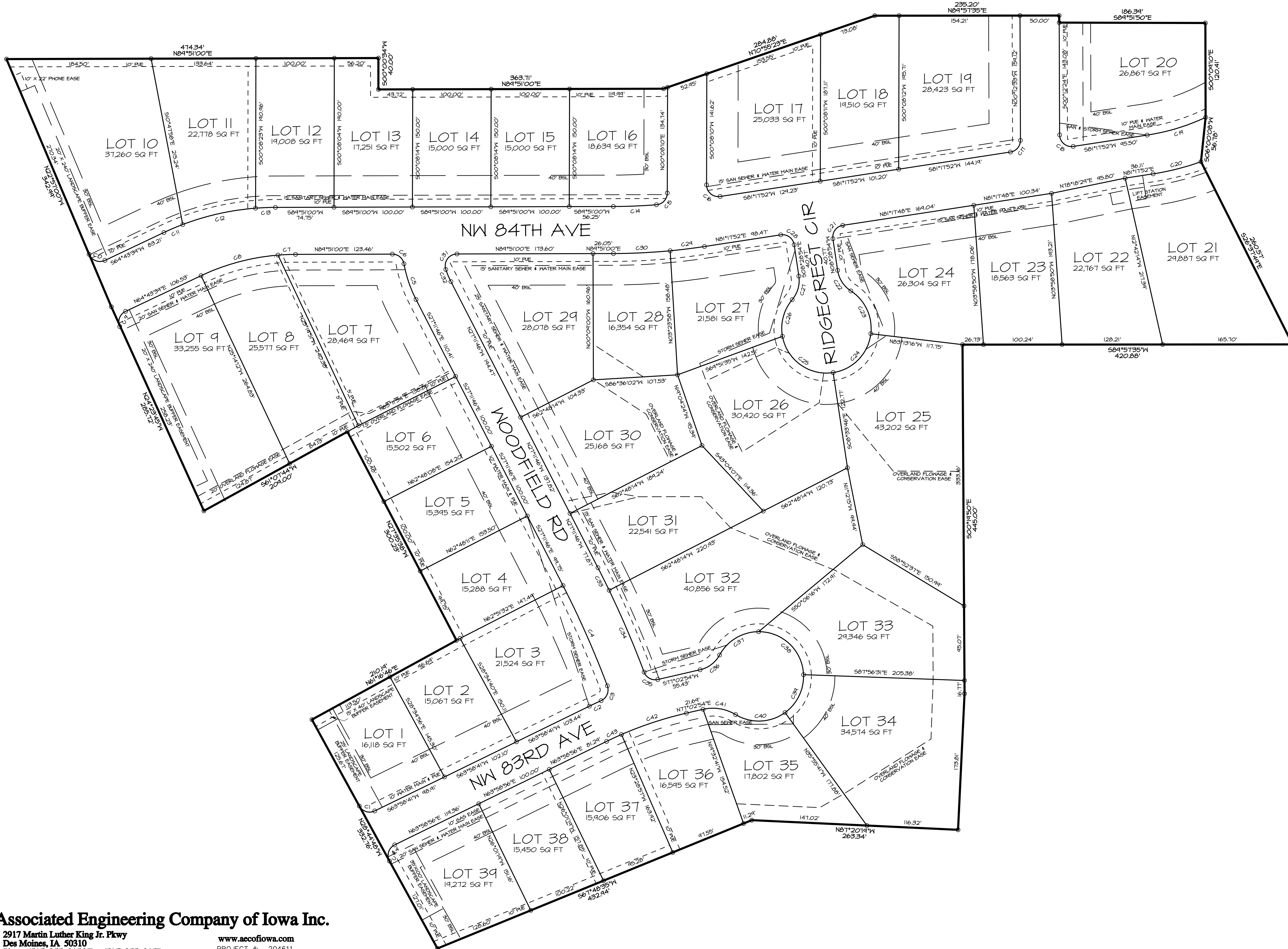


ORCHARD MEADOWS PLAT 2



CURVE TABLE

CURVE	ARC	CHORD BEARING	RADIUS	DELTA	CHORD	TANGENT
C1	22.84'	N12°23'04"W	15.00'	81°15'31"	20.70'	14.30'
C2	16.65'	N6°45'31"E	525.00'	1°44'02"	16.65'	4.33'
C3	22.60'	N22°36'20"E	15.00'	86°18'50"	20.52'	14.06'
C4	134.12'	N23°51'24"W	1248.66'	6°24'41"	134.65'	64.83'
C5	48.21'	N18°40'56"W	162.21'	17°01'40"	48.03'	24.28'
C6	20.44'	N80°04'33"W	15.00'	74°58'55"	14.28'	12.58'
C7	22.38'	S81°35'37"W	284.08'	4°30'48"	22.37'	11.81'
C8	102.11'	S75°10'36"W	284.08'	20°35'47"	101.96'	51.61'
C9	23.02'	N20°45'21"E	15.00'	81°56'54"	20.83'	14.41'
C10	24.17'	N64°06'13"W	15.00'	42°14'46"	21.64'	15.62'
C11	26.13'	N66°57'42"E	335.00'	4°28'07"	26.12'	13.07'
C12	45.47'	N71°17'37"E	335.00'	16°18'44"	45.15'	48.06'
C13	25.30'	N81°41'14"E	335.00'	4°14'35"	25.24'	12.65'
C14	55.03'	N81°34'38"E	720.00'	4°22'46"	55.02'	21.53'
C15	22.34'	N42°48'13"E	15.00'	85°14'23"	20.33'	13.82'
C16	25.87'	S44°16'54"E	15.00'	48°48'34"	22.78'	17.50'
C17	21.33'	N40°32'40"E	15.00'	81°24'04"	14.58'	12.42'
C18	25.78'	S44°27'20"E	15.00'	48°31'04"	22.73'	17.41'
C19	78.12'	N13°04'35"E	275.00'	16°16'36"	77.86'	34.33'
C20	63.06'	S75°44'07"W	325.00'	11°07'00"	62.46'	31.63'
C21	23.50'	S36°24'50"W	15.00'	84°46'01"	21.17'	14.44'
C22	32.14'	S32°42'40"E	38.00'	48°27'33"	31.14'	17.10'
C23	63.46'	S25°02'37"E	57.00'	63°47'07"	60.23'	35.47'
C24	74.21'	S44°08'22"W	57.00'	14°35'36"	64.08'	43.42'
C25	87.82'	N54°25'32"W	57.00'	88°16'28"	74.34'	55.31'
C26	50.00'	N14°50'40"E	57.00'	50°15'40"	48.41'	26.74'
C27	32.14'	N15°44'53"E	38.00'	48°27'33"	31.14'	17.10'
C28	23.61'	N53°35'31"W	15.00'	40°11'56"	21.25'	15.05'
C29	44.00'	S82°54'50"W	780.00'	3°13'54"	43.84'	22.00'
C30	72.43'	S87°11'23"W	780.00'	5°14'13"	72.40'	36.24'
C31	28.41'	S35°35'54"W	15.00'	108°30'42"	24.35'	20.84'
C32	16.78'	S22°55'04"E	15.22'	81°33'20"	16.74'	9.34'
C33	32.13'	S26°27'32"E	1248.66'	1°28'28"	32.13'	16.07'
C34	113.57'	S23°06'58"E	1248.66'	5°12'41"	113.53'	56.83'
C35	21.58'	S61°43'51"E	15.00'	82°26'50"	19.71'	13.14'
C36	32.14'	N52°44'08"E	38.00'	48°27'33"	31.14'	17.10'
C37	60.84'	N54°10'02"E	57.00'	81°04'04"	57.84'	33.68'
C38	81.63'	S46°13'06"E	57.00'	88°04'52"	78.25'	35.12'
C39	56.45'	S25°56'43"W	57.00'	56°14'36"	53.13'	30.46'
C40	66.87'	S81°40'32"W	57.00'	67°13'04"	63.10'	37.88'
C41	43.18'	N80°50'52"W	56.00'	44°10'52"	42.12'	22.73'
C42	81.38'	S71°46'59"W	475.00'	10°31'50"	81.18'	43.77'
C43	21.08'	S65°12'34"W	475.00'	2°32'14"	21.04'	10.52'
C44	24.27'	N11°36'56"E	15.00'	42°42'58"	21.71'	15.73'

LINE TABLE

LINE	BEARING	DISTANCE
L1	S81°01'54"W	5.22'
L2	S84°01'54"W	6.88'
L3	S84°51'50"E	10.43'
L4	N84°51'50"W	14.15'

NOTES

THIS IS A REDRAWING OF THE FINAL PLAT RECORDED IN BOOK 11423 PAGES 541-554.

